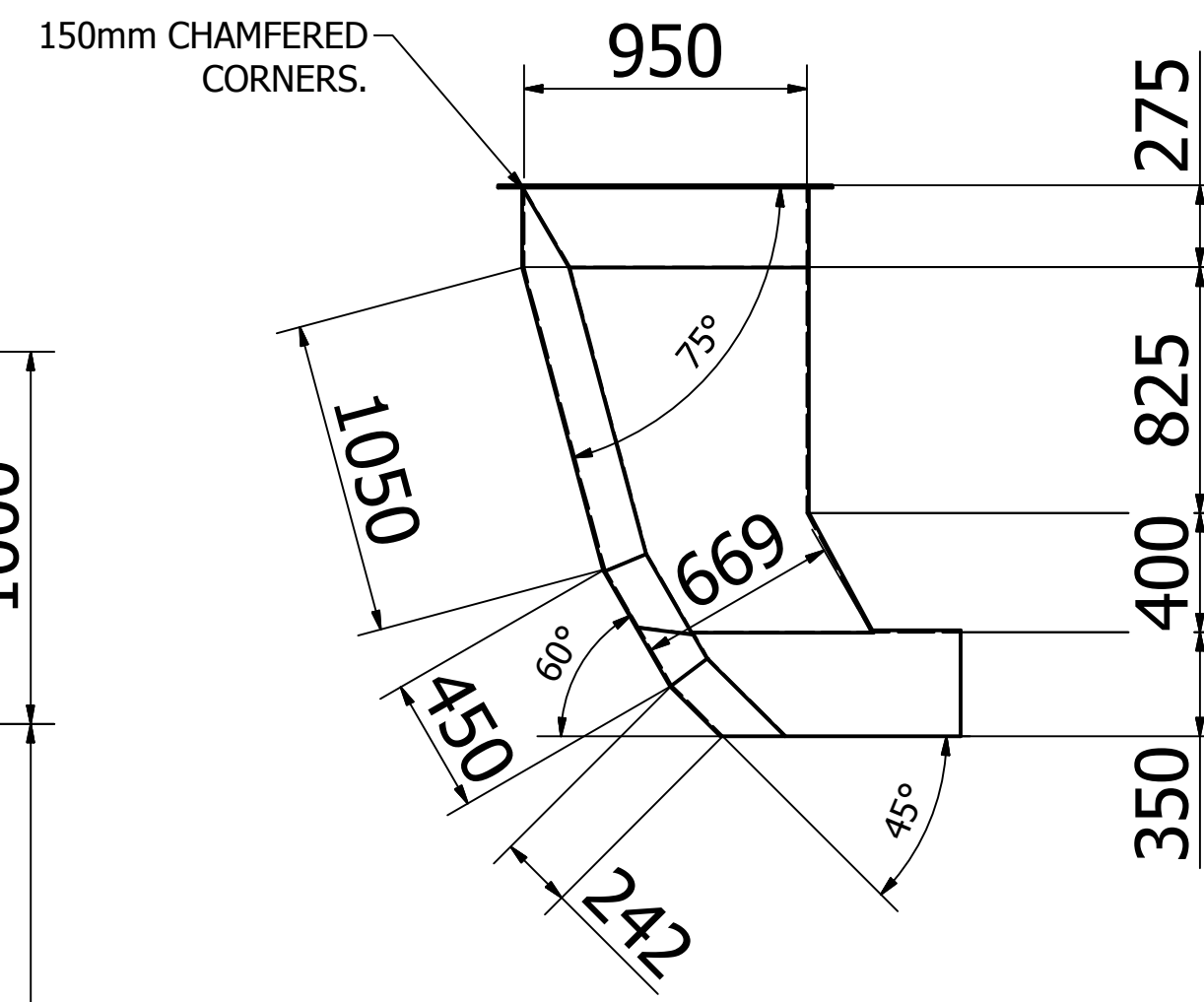
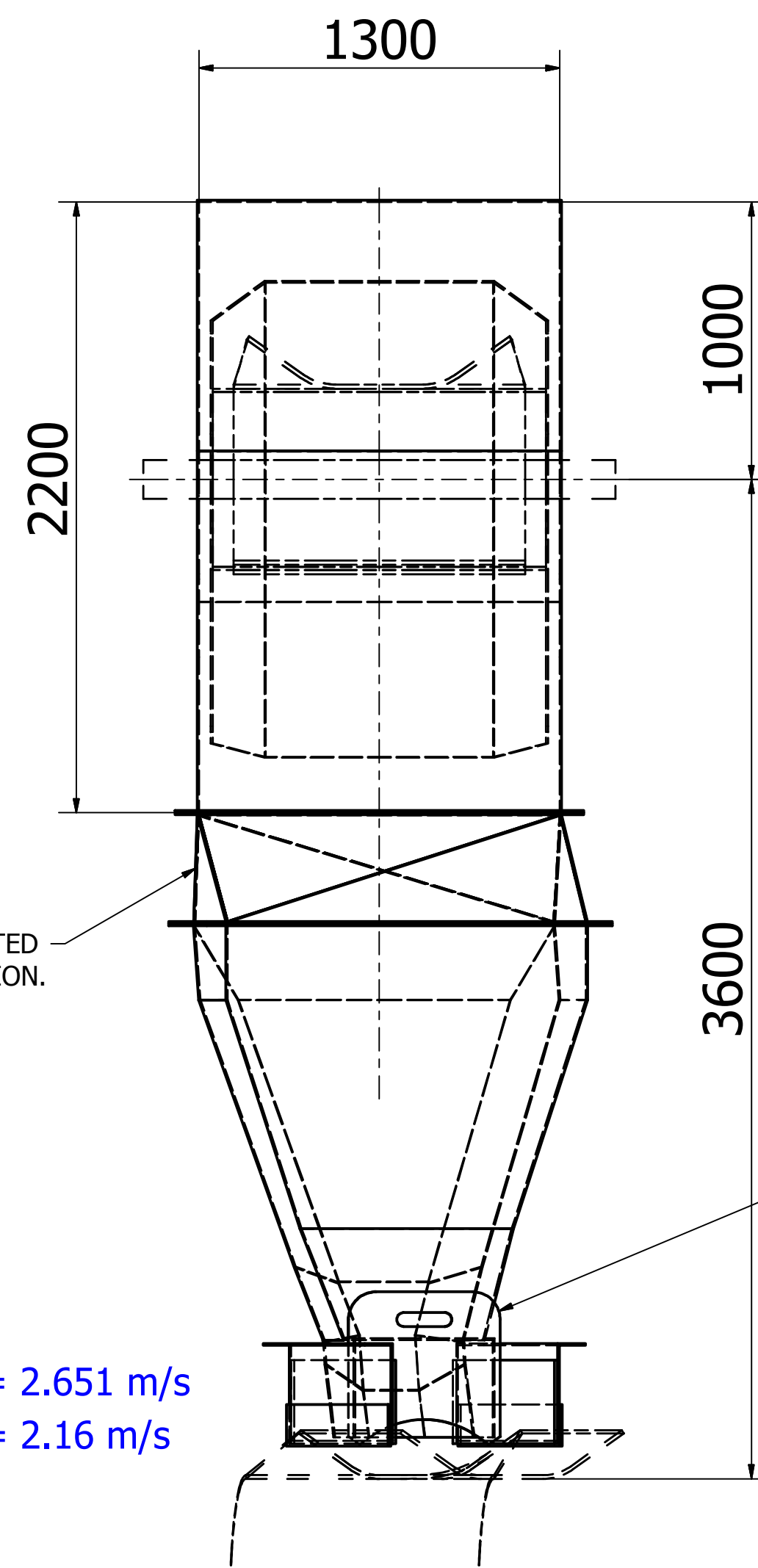
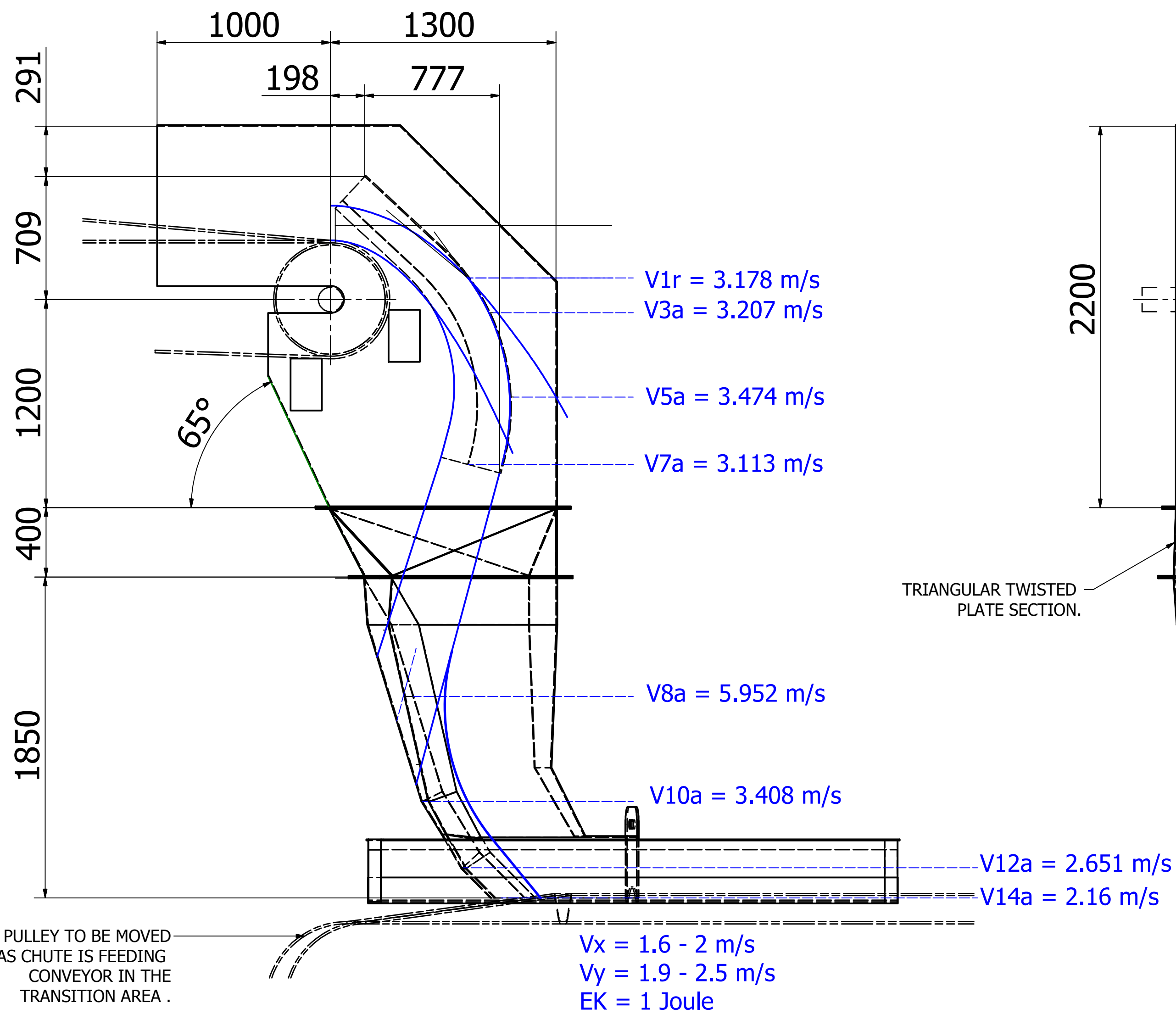
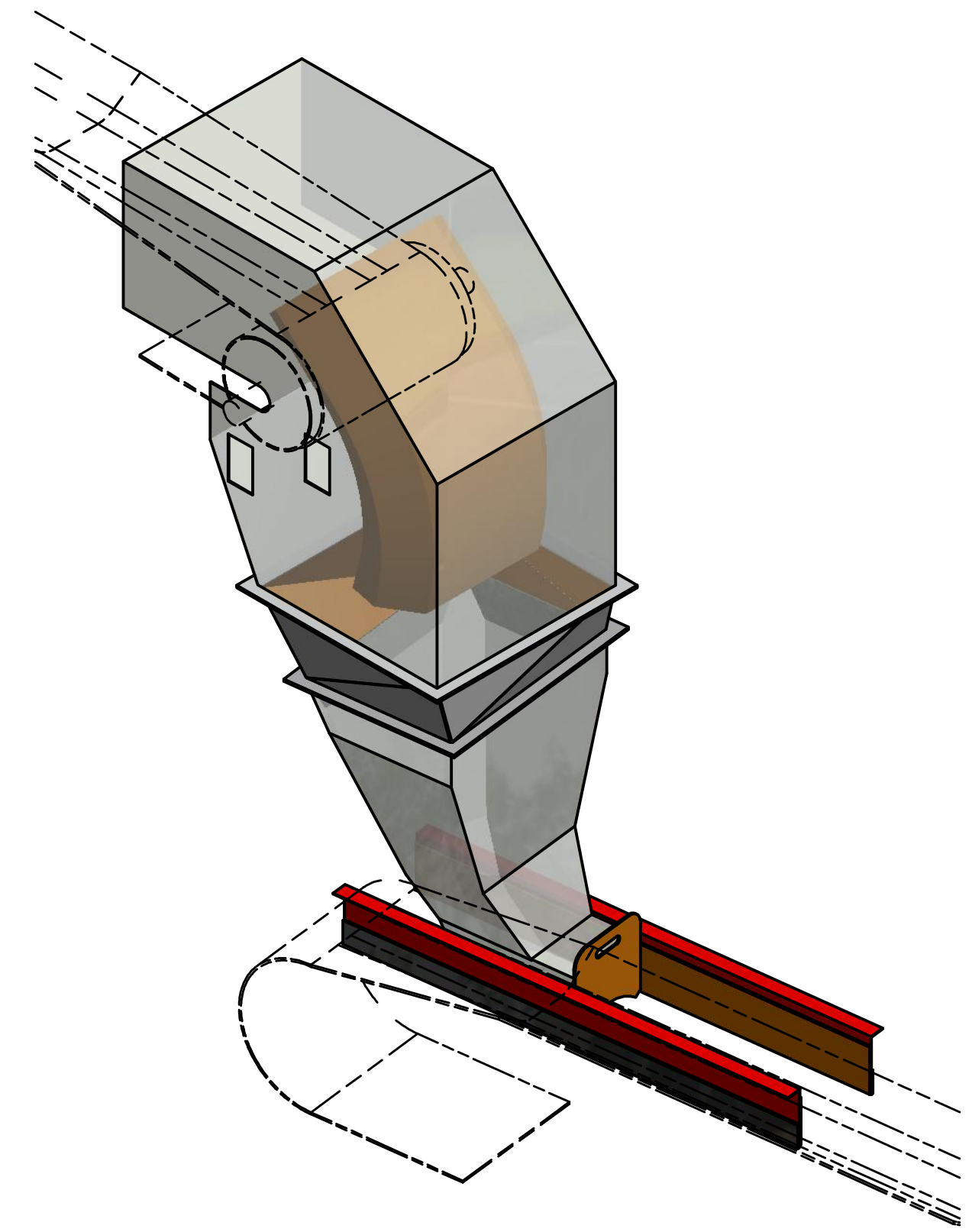


DETAILS OF HOOD



DETAILS OF SPOON

NOTES

1. ALL LINERS TO BE 25 THICK CERAMIC TILES
2. FINES BACK PLATE LINER TO BE TIVAR-88

PROFIED LINER PLATE FOR BROW HEIGHT ADJUSTMENT.

MATERIAL PROPERTIES:

MATERIAL TYPE = COAL
BULK DENSITY = 850 kg/m³
DESIGN CAPACITY = X t/hr
MAX. LUMPSIZE = X mm
% -4mm (FINES) = X %
MOISTURE CONTENT = 7.6 %
FEED BELT WIDTH = 1050 mm
CONVEYOR VELOCITY = X m/s
RECEIVING BELT WIDTH = X mm
CONVEYOR VELOCITY = X m/s

FUNCTIONAL DESIGN

According to Bulk Solids Flow Report - BSFSA-XXX

SKETCHES & CONTENTS PROTECTED IN TERMS OF COPYRIGHT ACT. NOT TO BE COPIED, REPRODUCED OR USED WITHOUT PERMISSION OF GREENTECHNICAL.				TITLE: XXXX XXX TRANSFER CHUTE			
LEAD ENGINEER				DWG. NO. CHUTE-001			
DRAWN: S.ROOS				REVISION: 1			
APPROVAL: [Signature]				SCALE: 1:20			
DATE: [Date]				V.O.S.			